

## Standard Queen or King

A lakeside sunset view with one King or one Queen size log bed, full bath and air conditioning. This room includes a coffee maker and color satellite television. Rates start at \$89-159/nightly



## Standard Double Queen or Queen with Bunk Bed

A lakeside sunset view with double Queen or Queen with Bunk Bed, full bath and air conditioning. This room includes a coffee maker and color satellite television. Rates start at \$89-159/nightly



## Standard Double Queen with Deck

A lakeside sunset view with double Queen, full bath, air conditioning and a Deck. This room includes a coffee maker and color satellite television. Rates start at \$99-169/nightly



## *Genuine Up North Hospitality*

- 18 Lakeside Lodge Rooms and Suites each with a Sunset View
- Manhattan's Restaurant on-site with lake view dining and award winning cuisine
- Rustic Log King and Queen Size Beds, Locally Handcrafted
- Complimentary Continental Breakfast
- Intimate Banquet/Meeting space
- Whirlpool and Sauna
- Air Conditioning
- Smoke Free Environment
- Use of Anytime Fitness located in Town Square
- Cable Satellite TV
- Whitefish Catering
- Complimentary Docking Privileges on Big Trout Lake of the Whitefish Chain of Lakes

**MANHATTAN BEACH**  
L•O•D•G•E  
EST. 1929

# MANHATTAN'S

at Manhattan Beach Lodge



Manhattan Beach Lodge has been serving guests for over 80 years on beautiful Trout Lake.

At Manhattan's we use only the highest quality ingredients and specialize in using local produce and products. Sit back, relax and enjoy the experience, not to mention the sunset.

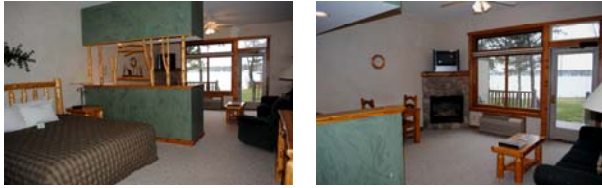
Check us out online for our current menu and drink specials.

[www.mblodge.com/restaurant](http://www.mblodge.com/restaurant)



### Mini King Suite

A lakeside sunset view with a King size log bed, sleeper sofa, full bath, and air conditioning, This room includes a fireplace, refrigerator, microwave, coffee maker, and color satellite television. Rates start at \$109-199/nightly



### Mini King Suite with Deck

All of the amenities of the Mini King Suite PLUS a deck. Rates start at \$129-249/nightly

### Luxury King Suite

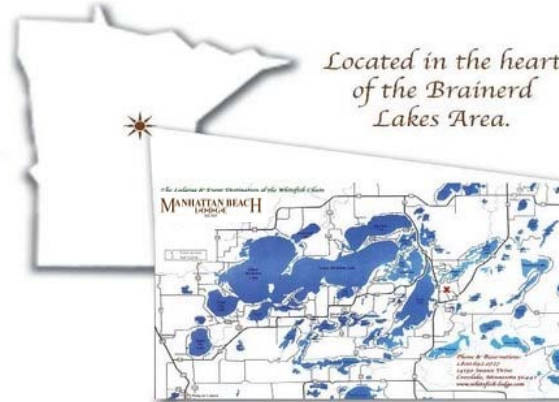
Enjoy a lakeside sunset view with a King size log bed in a private bedroom, sleeper sofa, full bath with a double Jacuzzi tub and air conditioning. This room includes a fireplace, refrigerator, microwave, coffeemaker, and color satellite television. Rates start at \$119-\$229/nightly



### Luxury King Suite with Deck

Enjoy all of the amenities of the Luxury King Suite PLUS a Deck. Rates start at \$129-\$249/nightly

## On the Whitefish Chain of Lakes in Beautiful Manhattan Beach, MN



*Located in the heart  
of the Brainerd  
Lakes Area.*

For more information:

Please call (218)692-3381

Or visit our website:

[www.mblodge.com](http://www.mblodge.com)

**MANHATTAN BEACH**  
L·O·D·G·E  
EST. 1929

39051 County Road 66

Manhattan Beach, MN 56442

**MANHATTAN BEACH**  
L·O·D·G·E  
EST. 1929

[mblodge.com](http://mblodge.com)



**(218)692-3381**  
**Manhattan Beach, MN**